

ECP38ZX

CONCRETE PUMPS / BOOM PUMPS

G.V.W(Gross Vehicle Weight) : 26.4ton



* Weight and dimension figures here are subject to change on various chassis option and additional axle application etc.

BOOM

Folding type	4-section Z-folding
Max. vertical reach	37.5m
Max. horizontal reach	33.5m
Max. depth reach	25.3m
Unfolding height	8.7m
Slewing angle	370deg.
End hose length	3m
Delivery pipe dia.	125mm

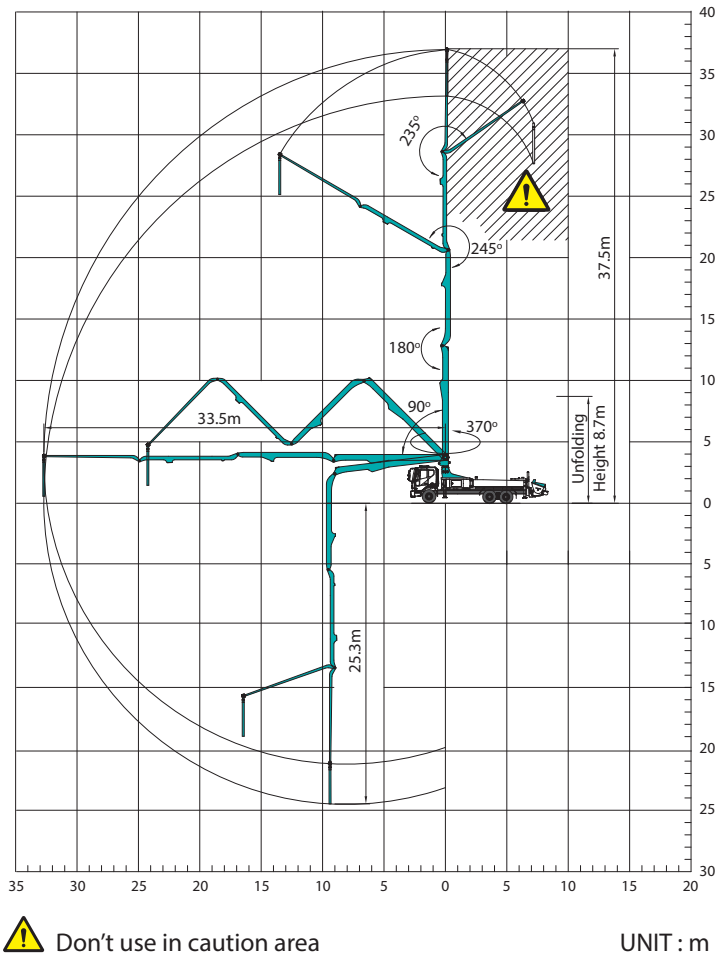
PUMP

Pump cell	2114	2116
Control system	Closed Free Flow Hydraulic	
Main pump	A4VG180	A4VG125x2
Concrete cylinder (mm)	230x2,100	230x2,100
Strokes No.(per min.)*	26	30
Concrete output(m³/h)*	140	160
Concrete pressure(bar)*	70	85
Transfer tube type	S-Tube, S2018 (Dia. 200-180mm)	
Volume of hopper (liter)	600	600

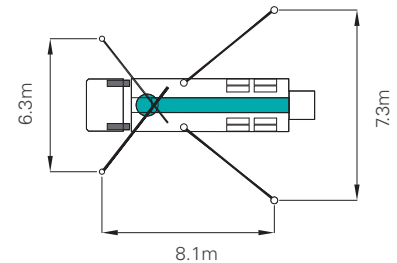
*Rod side. Output & pressure are theoretical data.

EVERDIGM

WORKING RANGE

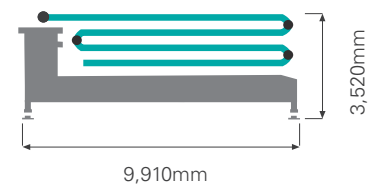


OUTRIGGER SPREAD



Front outrigger type X(Diagonal) Extension
Rear outrigger type Swing-out

UPPER BODY DIMENSION



FEATURES & SUPPLY SCOPE

Inductive proximity switch with indicator	Flushing water pump(30bar)
Single lip concrete piston	Water tank (400L)
Hard-chromed concrete cylinders	Spray nozzle with 15m hose
Outrigger pilot check valves	Auto lubrication system for hopper
Greasing port on boom link and pedestal	Tungsten carbide for wear ring and plate
Working light on pedestal	Flap elbow(180-150mm) with cleaning port
Aluminum platform(non-skid)	Reducing pipe(150-125mm)
Bubble gauge on both side	Agitator motors on both side hopper
	Working light on hopper

OPTIONS

Twin wall pipe line
Safety(oss) system
Working light on boom
Auto-lubrication for boom and pedestal
Hopper cover
Central manual lubrication for hopper
Safety device for hopper
Vibrator on hopper grid
Stainless hand rail
Auxiliary fuel tank on one side rear outrigger
Customized color
S2318(Big mouth)

*EVERDIGM reserves the right to make changes to specifications and supply scope. Specifications and supply scope are subject to change without prior notice.

EVERDIGM



HEAD OFFICE & FACTORY

49, Buyeong-gil, Jincheon-eup, Jincheon-gun, Chungcheongbuk-do, Korea (27844)
TEL +82-1588-0758 FAX +82-43-530-3318

SALES & MARKETING OFFICE

Room#1203, WoolimLion's Valley2, 2 Gasan digital 1-ro, Geumcheon-gu, Seoul, Korea (08591)
TEL +82-2-801-0700 FAX +82-2-801-0799 E-mail angelica@everdigm.com