

ECP47CX

CONCRETE PUMPS / BOOM PUMPS

G.V.W(Gross Vehicle Weight) : 37.8ton



* Weight and dimension figures here are subject to change on various chassis option and additional axle application etc.

BOOM

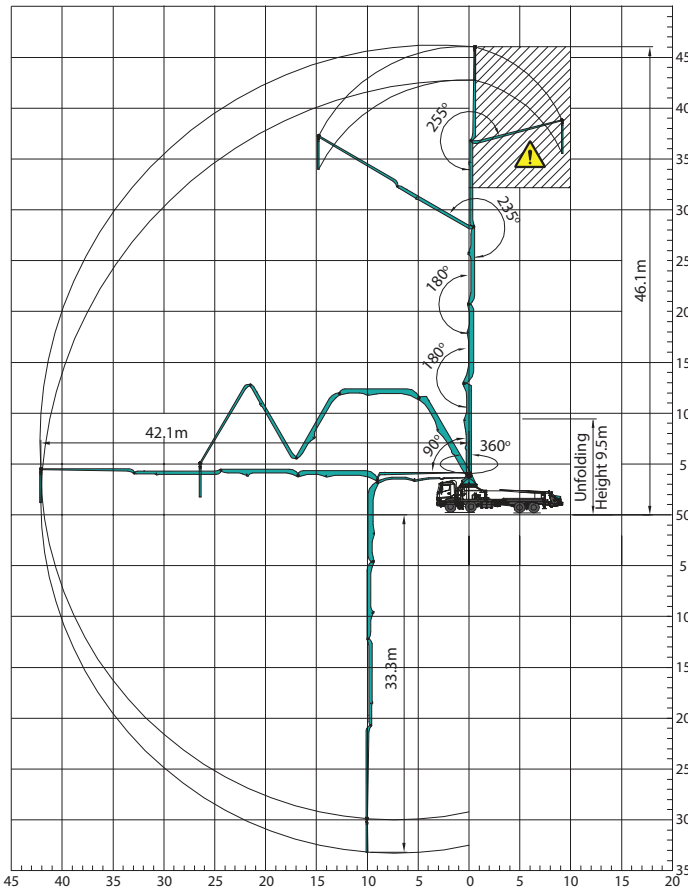
Folding type	5-section RZ-folding
Max. vertical reach	46.1m
Max. horizontal reach	42.1m
Max. depth reach	33.3m
Unfolding height	9.5m
Slewing angle	360deg.
End hose length	3m
Delivery pipe dia.	125mm

PUMP

Pump cell	2116
Control system	Closed Free Flow Hydraulic
Main pump	A4VG125x2
Concrete cylinder (mm)	230x2,100
Strokes No.(per min.)*	30
Concrete output(m ³ /h)*	160
Concrete pressure(bar)*	85
Transfer tube type	S-Tube, S2018 (Dia.200-180mm)
Volume of hopper (liter)	600

*Rod side. Ouput & pressure are theoretical data.

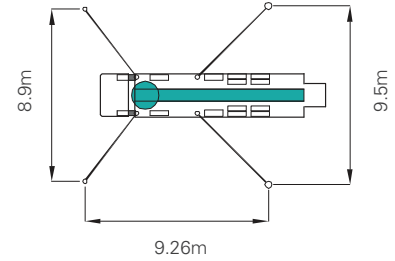
WORKING RANGE



Don't use in caution area

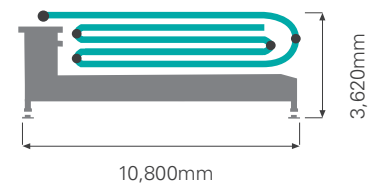
UNIT : m

OUTRIGGER SPREAD



Front outrigger type X(Diagonal) Extension
Rear outrigger type Swing-out

UPPER BODY DIMENSION



FEATURES & SUPPLY SCOPE

- | | |
|-------------------------------------------|------------------------------------------|
| Inductive proximity switch with indicator | Flushing water pump(30bar) |
| Single lip concrete piston | Water tank (600L) |
| Hard-chromed concrete cylinders | Spray nozzle with 15m hose |
| Outrigger pilot check valves | Auto lubrication system for hopper |
| Greasing port on boom link and pedestal | Tungsten carbide for wear ring and plate |
| Working light on pedestal | Flap elbow(180-150mm) with cleaning port |
| Aluminum platform(non-skid) | Reducing pipe(150-125mm) |
| Bubble gauge on both side | Agitator motors on both side hopper |
| | Working light on hopper |

OPTIONS

- Twin wall pipe line
- Safety(OSS) system
- Working light on boom
- Auto-lubrication for boom and pedestal
- Hopper cover
- Central manual lubrication for hopper
- Safety device for hopper
- Vibrator on hopper grid
- Stainless hand rail
- Auxiliary fuel tank on one side rear outrigger
- Customized color
- S2318(Big mouth)

*EVERDIGM reserves the right to make changes to specifications and supply scope. Specifications and supply scope are subject to change without prior notice.

EVERDIGM



HEAD OFFICE & FACTORY

49, Buyeong-gil, Jincheon-eup, Jincheon-gun, Chungcheongbuk-do, Korea (27844)
TEL +82-1588-0758 FAX +82-43-530-3318

SALES & MARKETING OFFICE

Room#1203, WoolimLion's Valley2, 2 Gasan digital 1-ro, Geumcheon-gu, Seoul, Korea (08591)
TEL +82-2-801-0700 FAX +82-2-801-0799 E-mail angelica@everdigm.com